

# THE TAY

1st Baritone

Chris Brown

$\text{♩} = 60$

9

$p$

2

15 **A**  $\text{♩} = 72$

1

$p$

24

31

$mf$

38

44

49

55 **B**

62

1

1

1

70 **C**  $\text{♩} = 60$

9

7

$p$

90

3

#

93 **D** *mp* *mf* *mp* *mp*

105 *mf* *mp*

114 **E** *mp* *mf* *mp* *mf*

133 **F** *mp* *mp* *mf* *mp*

144 *mp* *mf* *mp* *pp*

155 *mp* *rall.* *acc.* *pp*

164 **G** *ff* *16*

186 *Trom* *p* *p* *pp*

195 *p* *p*

205 **H** *p*

215 *mf*

225 **I** *ff* *7*

239 ♩ = 96



251



263 ♩ = 108



271



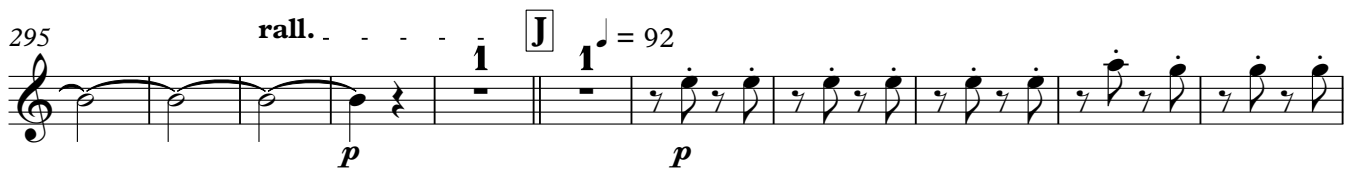
278



286



295



306

323 **K** ♩ = 72

337



## 1st Baritone

4

348 **L** *f* *p*

354 **M** *mp* *mf* *mf*

362 *f* *ff*

368 *rall.* **2** *A tempo* *Breathe through instrument; like steam train*  
*p < f > p < f > p < f > p < f >*

376 *accel.* *p*

383 **N** *♩* = 120 *ff* 6 6 6 6

390 *rall.* 6 6 6 6

395 6 6 **2** *mf* *f* *mp* *mf* *p* *mp* *pp* **1**

406 **1** *p* *pp* **2** **7** *p* **1** *♩* = 60

422 **O** **3** *p* 6 6 6 *mf* 6 6 6

431 6 *f* *f* 6

439 *rall.* 6 *ff* *f* *ff*